



## IST-203 Hot Cutover Tool

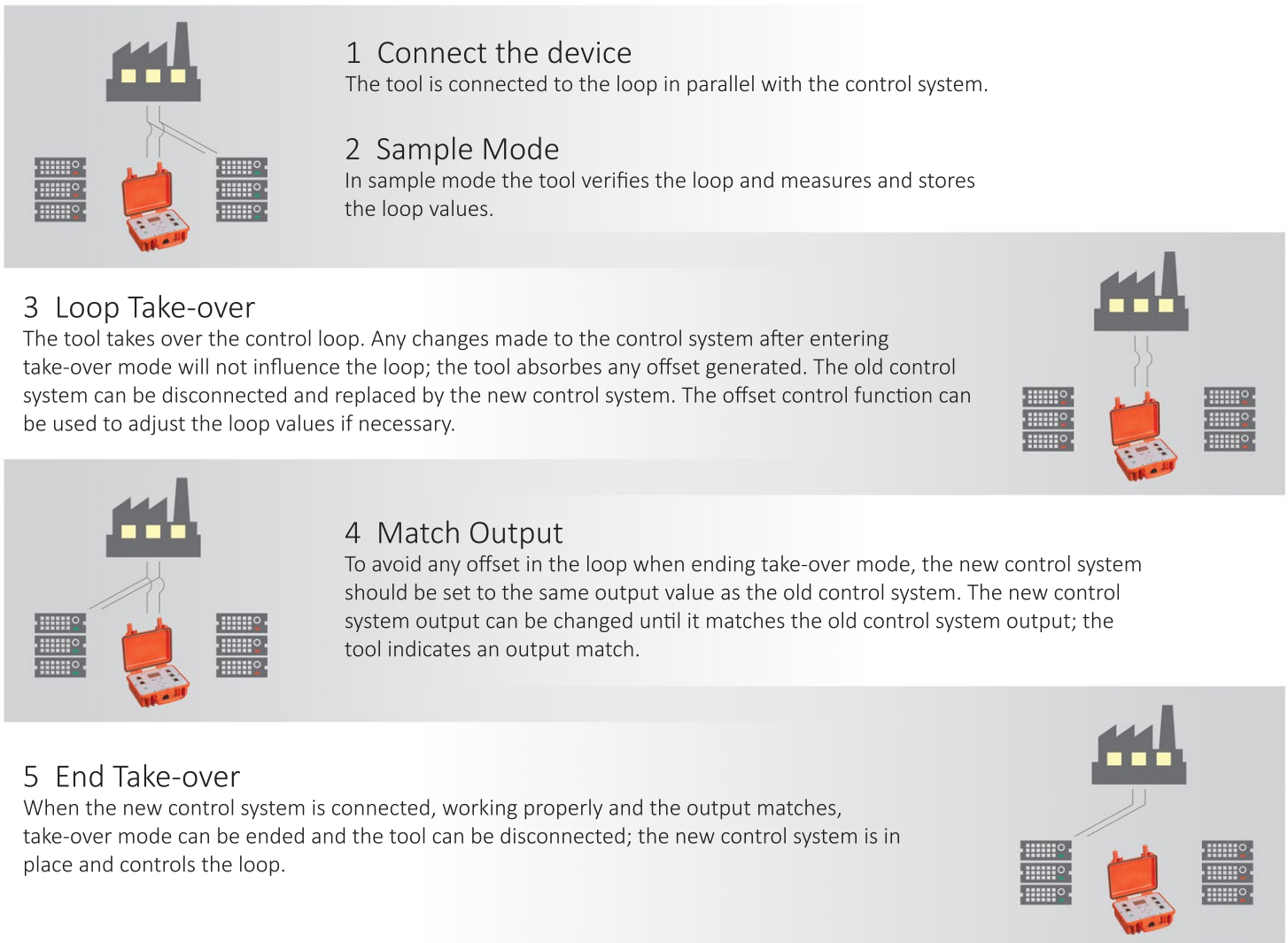
Takes over and simulates 0(4)-20 mA loops during active process conditions

The IST-203 Hot Cutover Tool is designed to take over an active 0(4)-20 mA loop from a control system, e.g. DCS or PLC, allowing the user to perform a hot cutover control system migration without influencing the process. The IST-203 guides the technician through the hot cutover process, minimizing human errors and risks while providing maximum control.

### Features

- Improved efficiency, safety and control during PLC or DCS migrations
- Software guided process
- Manual offset control during take over
- Improved Check Connection with auto loop impedance check
- Output Match functionality
- Step-by-step migration
- Easy emergency repairs of control loop components and cable renewal
- Up to 10 hours battery power
- MODBUS TCP support
- Continuous self-test- improving reliability and availability

## Simplified application flow



### Specifications

Max. loop voltage: 24 V  
 Loop current: 0(4)-20 mA (limited at 27 mA)  
 Loop load: 10-1200 Ω (20 mA at 24 V)

### Battery

Charger: 90-264 VAC charger  
 Battery: 10 hours continuously use

### Interface

Interface: Modbus TCP  
 Connections: Loop; Charger; Network;  
 Currentclamp; HART®  
 Display: 128 X 64 pixel LCD display with LED backlight  
 and 8 lines  
 Status LED: 1 green LED - Active MODBUS connection  
 1 orange LED - Active Takeover process  
 1 red LED - Battery status  
 1 red LED - System status  
 Buttons: 5 buttons (up, down, left, right, center)

### Operating

Operating temperature range: 15°C- 35°C



Istec International B.V.  
 Meer en Duin 8  
 2163 HA Lisse  
 The Netherlands  
 Tel: +31 (0)252 433 400  
 Email: mail@istec.nl  
 Web: www.istec.nl

